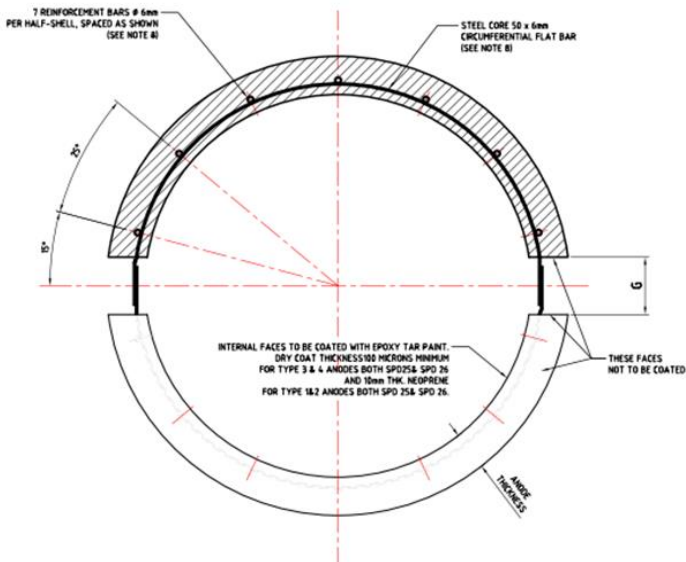
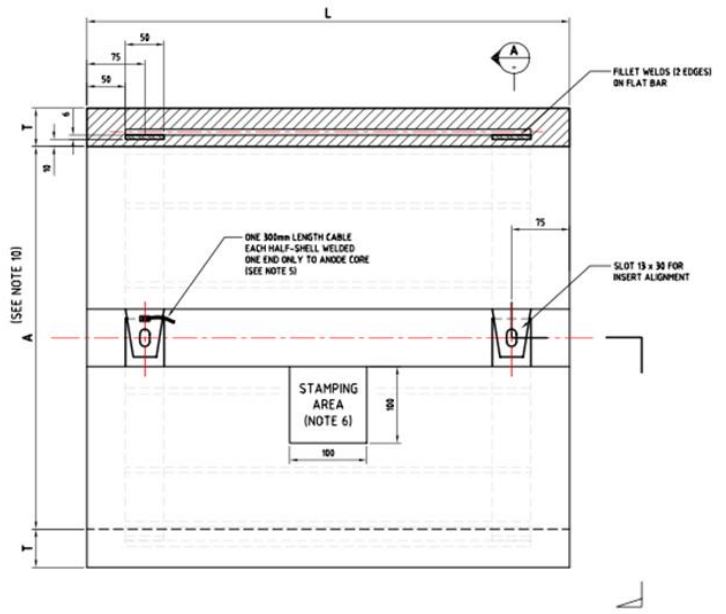


# BRACELET ALUMINUM ANODE

## TEMPORARY CATHODIC PROTECTION SYSTEM



SECTION A



ANODE SIDE VIEW

REV.	Date	Description/Issued for	Prepared	Checked	APP

**TECHNICAL DATA SHEET**

**Acc. to DNV-RP-B401:**

Closed Circuit Potential (V) = -1.05

Electrochemical Capacity (Ah/kg) (Ref. to Ag/AgCl) = 2500

Efficiency (%) = 90

**Performance Properties**

**Chemical Composition**

Aluminum Anodes (According to DNV-RP-B401)	
Elements	Composition
Zn	2.5-5.75
Al	rem.
In	0.015-0.040
Cd	≤ 0.002
Si	≤ 0.12
Fe	≤ 0.09
Cu	≤ 0.003

**Dimension (mm)**

L: 450

D: 829

T: 39

G: 50

**Insert (mm)**

Wb: 50

Tb: 6

**Wt. (Kg) (Approx.)**

116

**Cable**

Length & Size: ---

**Note:**

\_Anode type is tapered type.

\_An immersion -grade two- component epoxy with minimum thickness 100 μm (Internal and side faces) shall be applied.